

ARCHIE Stool



Features:

The bold curves are married with different intersections and proportions, lending a minimalist form to Archie that is carefully considered.

Archie stool comes in multiple heights and the bench comes in multiple widths.

Archie stool is 100% in Melbourne, Australia.

Options:

- 3 and 4 legs

Design: NICHOLLS DESIGN

Warranty: 5 year

Finishes:

American white oak or Rock Maple.

Raw 2 pack lacquer, clear 2 pack lacquer matt, solid black matt, walnut stain matt, terracotta stain matt.

Solid colour MDF.

Solid Timber:



American
Oak



Rock
Maple

Solid MDF:



Peacock
Blue



Burnt
Pink



Plum

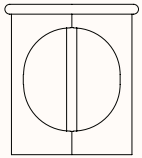
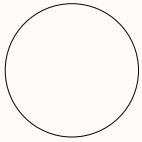


Wattle



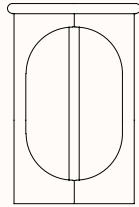
Black

Dimensions



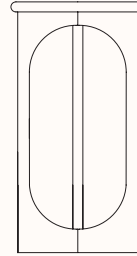
Archie Stool (3 Legs)

DIA 400mm
OH 450



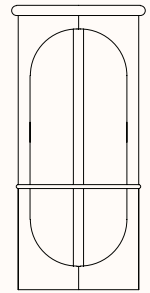
Archie Stool (3 & 4 Legs)

DIA 400mm
OH 600



Archie Stool (4 Legs)

DIA 400mm
OH 750mm



Archie Stool (4 Legs)

DIA 400mm
FR 315mm
OH 850mm



Archie Bench

OW 1200-1500mm
OD 450mm
OH 450mm



Archie Bench

OW 1800mm
OD 400mm
OH 450mm